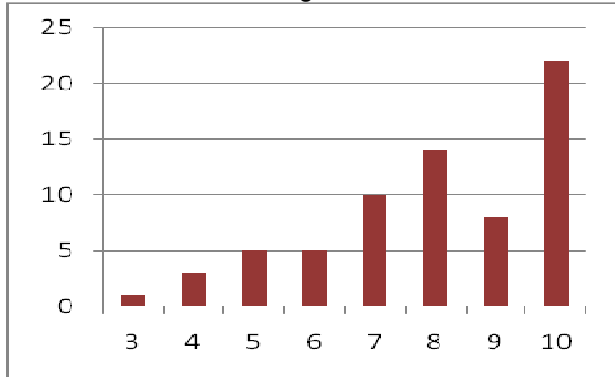


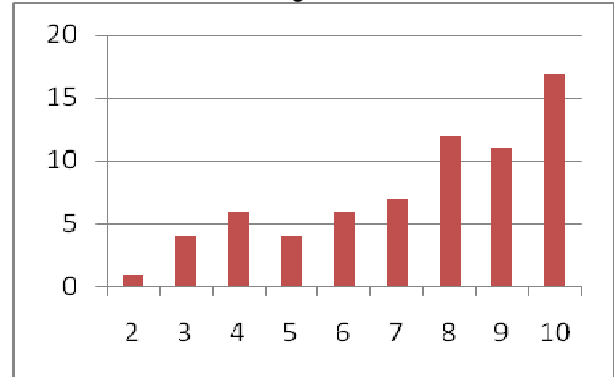
Union1 Service Unit 2010 Leader Survey Results

(68 surveys completed):

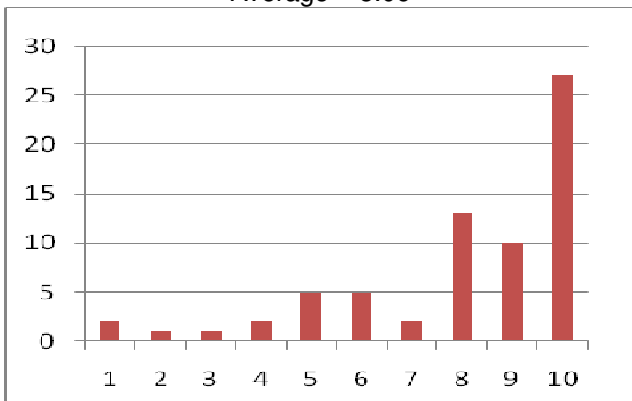
Union1 offers sufficient programming for girls.
Average – 8.0



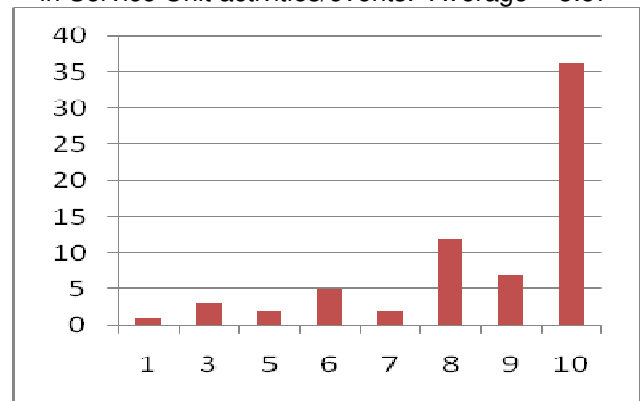
Union1 offers sufficient programming for adults.
Average – 7.47



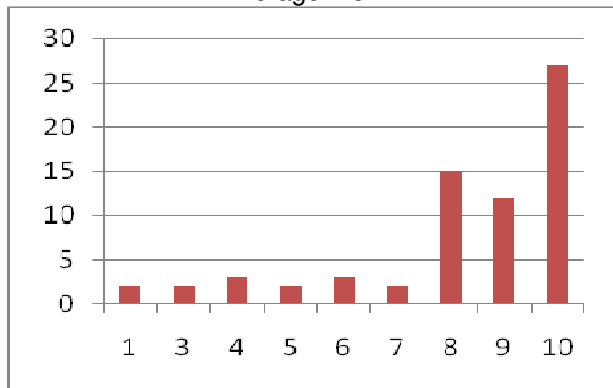
Union1 Team offer support for all leaders (including new).
Average – 8.06



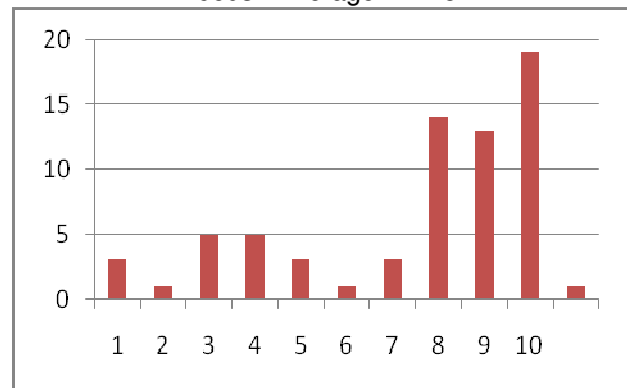
Union1 provides opportunities for all leaders to be involved in Service Unit activities/events. Average – 8.57



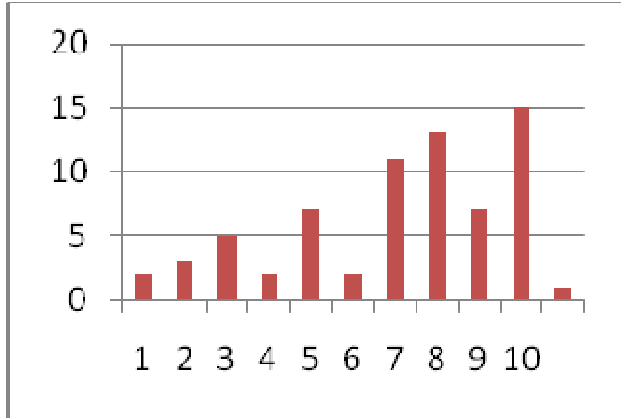
Union1 Team communicates effectively with leaders.
Average – 8.24



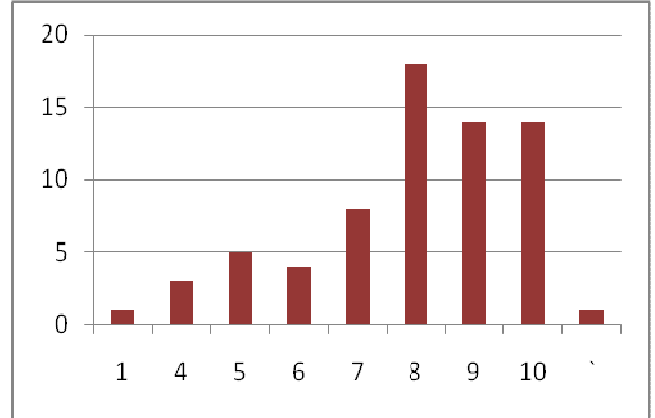
General Meeting portion of monthly leader meeting suits my needs. Average – 7.48



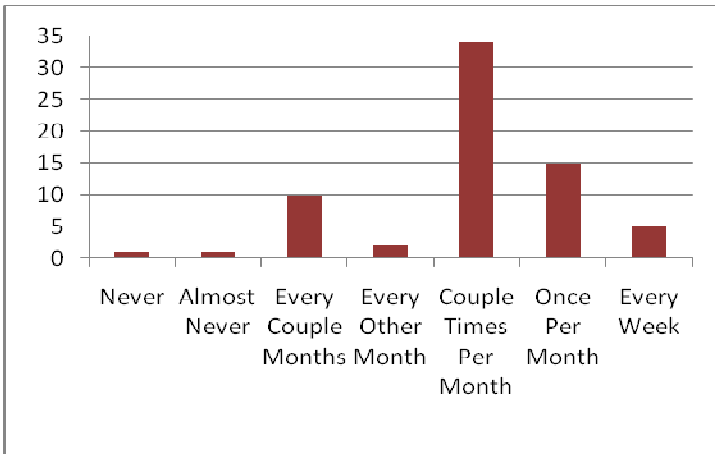
Age-Level Roundtable portion of monthly leader meeting suits my needs. Average – 7.04



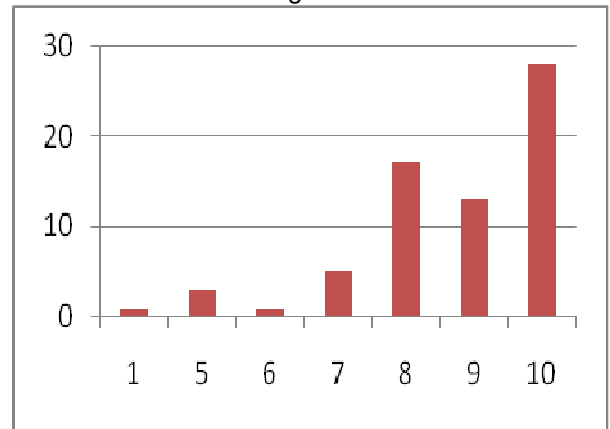
Service Unit website is useful to me. Average – 7.88



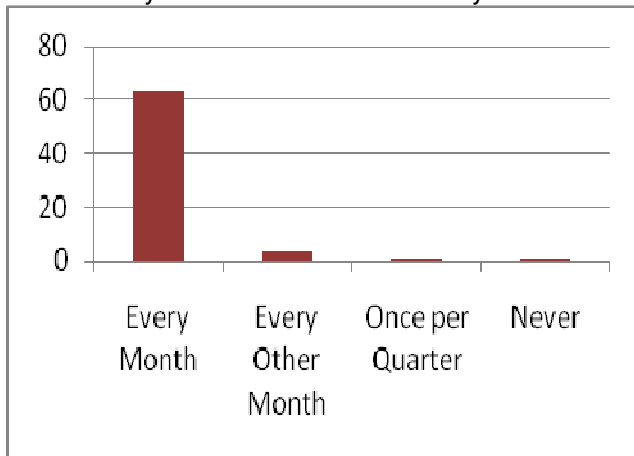
How often do you visit the Union1 website?



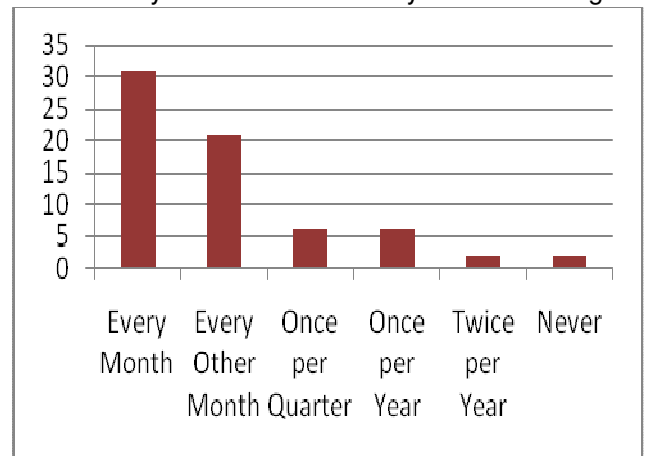
Union1 newsletter is useful and suits my needs. Average – 8.68



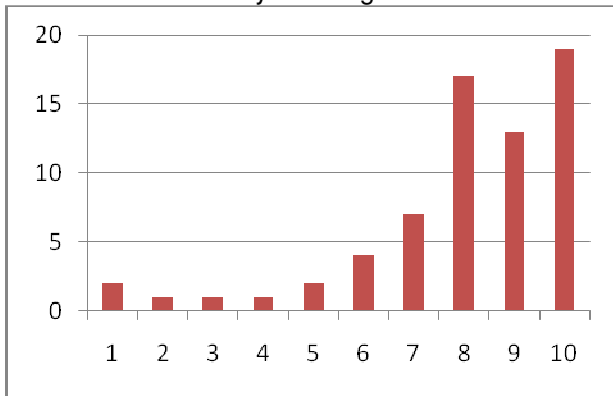
How often you read the Union1 monthly newsletter?



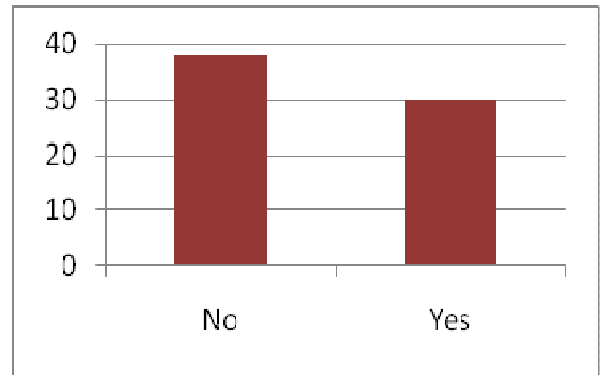
How often you attend the monthly leader meetings?



Service Unit communicates information from Council effectively. Average – 8.01



Did you serve on a Union1 event committee this year?



Are you interested in serving on the Union1 Team?

